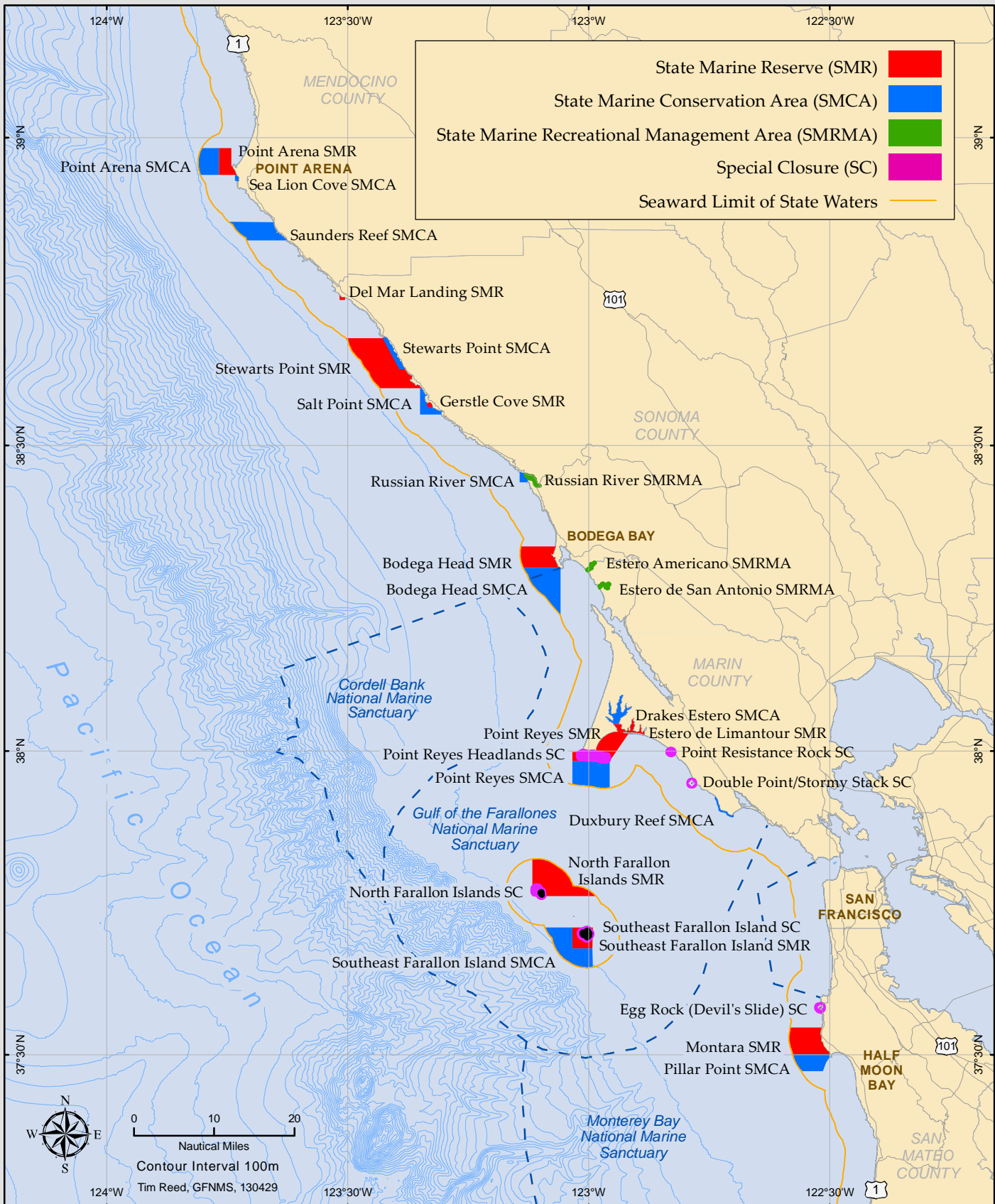


California State Designated MARINE PROTECTED AREAS

Point Arena to Pigeon Point



Marine Protected Area

Regulations

Special Closures (No-Entry Zones) – NO PERSON... shall enter this area at any time.

No person except California Department of Fish and Wildlife (CDFW) employees or employees of the United States Fish & Wildlife Service, National Park Service, or United States Coast Guard, in performing their official duties, or unless permission is granted by the CDFW, shall enter this area at any time.

| | |
|---|--|
| Point Reyes Headlands Special Closure | No entry from the mean high tide line to a distance of 1,000 ft. seaward of the mean lower low tide line |
| Point Resistance Rock Special Closure | No entry from mean high tide line to a distance of 300 ft. seaward of the mean lower low tide line of any shoreline of Pt. Resistance Rock |
| Double Point/Stormy Stack Special Closure | No entry from mean high tide line to a distance of 300 ft. seaward of the mean lower low tide line of any shoreline of Stormy Stack Rock |
| Egg (Devil’s Slide) Rock to Devil’s Slide Special Closure | No entry from mean high tide line to a distance of 300 ft. seaward of the mean lower low tide line of any shoreline of any of the three rocks comprising Egg (Devil’s Slide) Rock; Transit between the rock & the mainland is prohibited |
| North Farallon Islands Special Closure | No vessel operation or anchoring within 1,000 ft. of any shoreline of North Farallon Island, & within 300 ft. of any shoreline of the southern islets, including the Isle of St. James, except as needed due to hazardous weather. Five nautical miles/hour speed limit within 1,000 ft. of any shoreline of the 3 southern islets. |
| Southeast Farallon Island Special Closure | No vessel operation or anchoring within 300 ft. of shore, except at Fisherman’s Bay & East Landing. Closures are year-round, except the southeast side of Saddle (Seal) Rock and between Fisherman’s Bay & East Landing, which are closed from Dec. 1 to Sept. 14. Year-round 5 nautical miles/hour speed limit within 1,000 ft. of shore. Other restrictions apply. See CCR T14 Section 632(b)(55). |

State Marine Reserves **Take of all living marine resources is prohibited**

| | |
|---|--|
| Point Arena State Marine Reserve Del Mar Landing State Marine Reserve Stewarts Point State Marine Reserve Gerstle Cove State Marine Reserve Bodega Head State Marine Reserve Point Reyes State Marine Reserve Estero de Limantour State Marine Reserve Montara State Marine Reserve North Farallon Islands State Marine Reserve Southeast Farallon Island State Marine Reserve | Take of all living marine resources is prohibited |
|---|--|

State Marine Conservation Areas **Take of all living marine resources is prohibited, EXCEPT:**

| | |
|--|--|
| Point Arena State Marine Conservation Area | Recreational take of salmon by trolling; or Commercial take of salmon with troll fishing gear |
| Sea Lion Cove State Marine Conservation Area | Recreational and commercial take of marine invertebrates and marine aquatic plants is prohibited. Take of all other species is allowed. |
| Saunders Reef State Marine Conservation Area | 1) The recreational take of salmon by trolling [sub-section 27.80(a)(3)]; 2) The commercial take of salmon with troll fishing gear [sub-section 182.1(l)] and urchin. |
| Stewarts Point State Marine Conservation Area | Recreational take (from shore only) of marine aquatic plants other than sea palm, marine invertebrates, finfish by hook & line, surf smelt by beach net, species authorized in Section 28.80 by handheld dip net |
| Salt Point State Marine Conservation Area | Recreational take of abalone & finfish |
| Russian River State Marine Conservation Area | Recreational take of Dungeness crab by trap & surf smelt by hand-held dip nets or beach nets; or Commercial take of Dungeness crab by trap |
| Bodega Head State Marine Conservation Area | Recreational take of pelagic finfish by trolling, Dungeness crab by trap & market squid by hand-held dip net; or Commercial take of pelagic finfish with troll fishing gear or round haul net, Dungeness crab by trap & market squid by round haul net |
| Point Reyes State Marine Conservation Area | Recreational take of salmon by trolling, Dungeness crab by trap; or Commercial take of salmon with troll fishing gear & Dungeness crab by trap |
| Drakes Estero State Marine Conservation Area | Recreational take of clams; or commercial aquaculture of shellfish pursuant to a valid State water bottom lease & stocking permit |
| Duxbury Reef State Marine Conservation Area | Recreational take of finfish from shore only and abalone |
| Pillar Point State Marine Conservation Area | Recreational take of pelagic finfish by trolling, Dungeness crab by trap & market squid by hand-held dip net; or Commercial take of pelagic finfish with troll fishing gear or round haul net, Dungeness crab by trap & market squid by round haul net |
| Southeast Farallon Island State Marine Conservation Area | Recreational take of salmon by trolling; or Commercial take of salmon with troll fishing gear |

State Marine Recreational Management Areas **Take of all living marine resources is prohibited, EXCEPT:**

| | |
|--|---|
| Russian River State Marine Recreational Management Area Estero Americano State Marine Recreational Management Area Estero de San Antonio State Marine Recreational Management Area | Recreational take of waterfowl is allowed unless otherwise restricted by hunting regulations (sections 502, 550, 551 & 552) |
|--|---|

Finfish are defined in subsection 632(a)(2) as: any species of bony fish or cartilaginous fish (sharks, skates & rays). Finfish do not include amphibians, invertebrates, plants or algae. The definition of finfish provided in Section 159 does not apply to this Section. **Pelagic Finfish** are defined in subsection 632(a)(3) as: northern anchovy (*Engraulis mordax*), barracudas (*Sphyraena* spp.), billfishes* (family *Istiophoridae*), dolphinfish (*Coryphaena hippurus*), Pacific herring (*Clupea pallasii*), jack mackerel (*Trachurus symmetricus*), Pacific mackerel (*Scomber japonicus*), salmon (*Oncorhynchus* spp.), Pacific sardine (*Sardinops sagax*), blue shark (*Prionace glauca*), salmon shark (*Lamna ditropis*), shortfin mako shark (*Isurus oxyrinchus*), thresher sharks (*Alopias* spp.), swordfish (*Xiphus gladius*), tunas (family *Scombridae*), and yellowtail (*Seriola lalandi*). *Marlin is not allowed for commercial take.